

Macola Enterprise Suite Release Notes: Macola ES9.5.300

Release: version ES9.5.300

Controlled Release Date: October 26, 2009

General Availability Release Date: TBA

This document announces the Controlled Release of Macola ES version ES9.5.300 to Exact consultants and partners for internal review only. This release is NOT currently available to install at a customer site.

This release includes corrections and several enhancements.

Update Checklist

You should print and complete the update checklist when performing an update. This checklist can help guide you through a smooth update and installation process. Please read document 15.784.289. (This document opens in a new window)

Important Update Information

Upgrading from release Macola ES9.5.100 or previous

Due to changes in the download process, If you are updating from release Macola ES9.5.100 or previous and Exact Synergy ES9.5.100 or previous you MUST download a new Product Updater. Links to both product updaters and detailed instructions may be found in document 19.597.334.

Updating from release Macola ES9.5.200

If you are updating from Macola ES9.5.200 and Exact Synergy ES9.5.200, you may use the Netupdater to update your release to Macola ES9.5.300 and Exact Synergy ES9.5.300. Specific instructions are available in document 19.597.249.

Important Information for Customers Running Inventory Management

Once the update has been completed, you will receive the following message if you are licensed for Inventory Management:

"New Functionality has been added to the In-Transit Inventory in release ES9.5.300. If you have In-Transit transactions in an approved or shipped status you MUST RUN RESET ALLOCATION and RESET ON ORDER processes before processing ANY In-Transit Inventory."

Please ensure that you follow the directions or you will have incorrect inventory allocations.

Operating System and Microsoft SQL Server Support Enhancements

Macola ES release 9.5.300 introduces support for Microsoft® Windows Server 2008 32-bit and 64-bit systems. This release also introduces support for Microsoft SQL Server 2008 32-bit and 64-bit systems.

Note: WMS, Exact Synergy, and Exact InterConnect are not supported on Windows Server 2008.

Enhancements

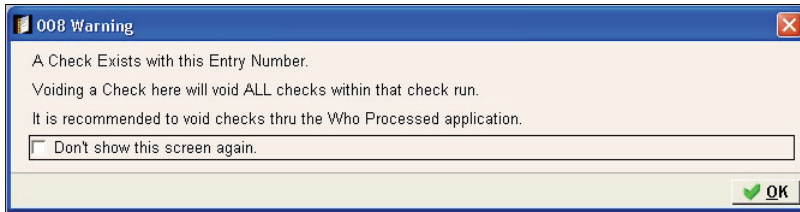
Below are short summaries of the enhancements to this release of Macola ES. These enhancements are described in more detail in the Macola ES help.

Accounts Payable

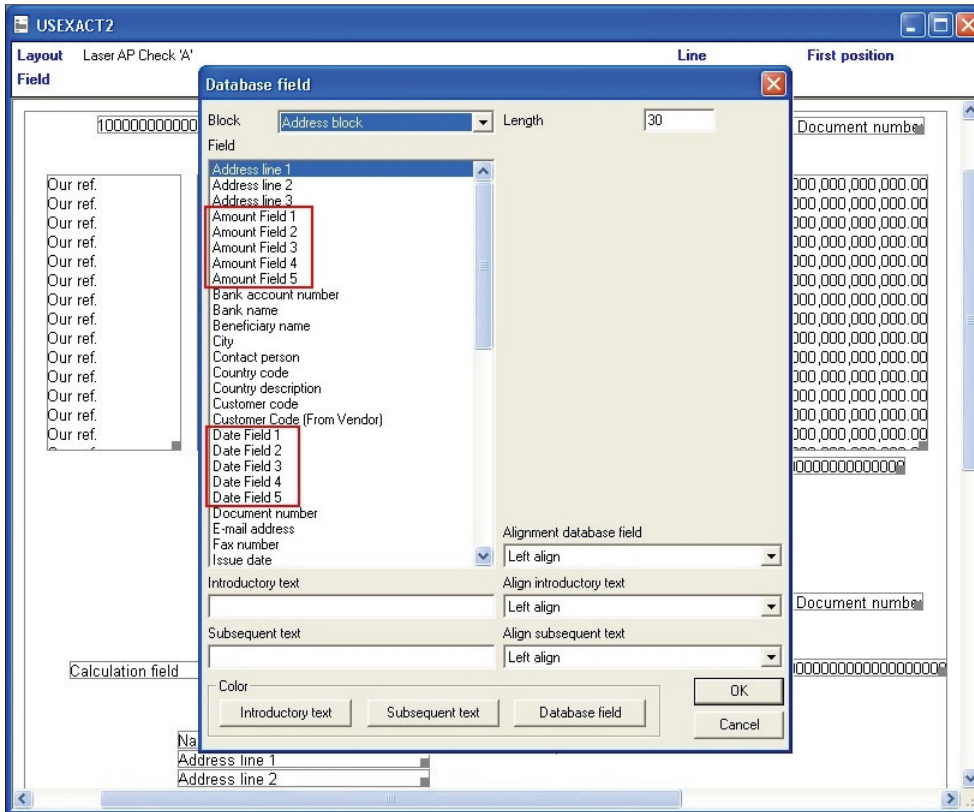
- ▶ Added an option to sort the Pre-check Writing Report and Check Register by vendor number or vendor name.

The screenshot shows a software interface for generating a 'Pre-check writing report'. The title bar reads 'A/P / Reports / Pre-check writing report'. Under the 'Range Criteria' section, there are three rows of search criteria: 'Vendor number' with a dropdown menu set to 'Vendor number', 'Bank account reference' with a dropdown menu set to 'Vendor name', and an empty row. Each row has a 'to' field and a checkbox labeled 'All'. Below this is a 'Layout' section with a red warning icon and a 'Display Types' section with two checked checkboxes: 'Authorized' and 'To be authorized'.

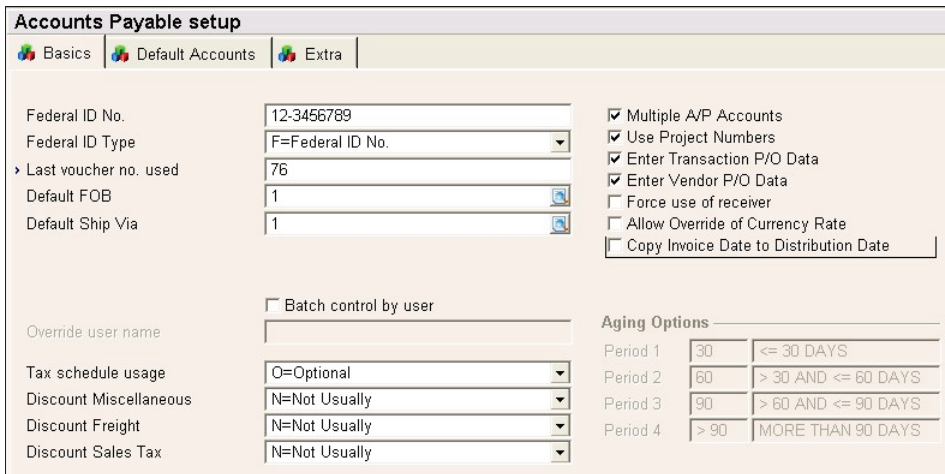
- ▶ When trying to void a check from the vendor card that had other checks in the same check run, a message warns that voiding will void all checks in that check run. Checks should be voided using the Who Processed screen. Selecting "Don't show this screen again" will suppress this message window. It can be turned on again on the User Settings screen (System / Company / User Settings).



- ▶ When you create a vendor from a resource, the Currency Code, which is a required field on the Extra tab, defaults from the currency code entered on the resource master maintenance screen or the default currency for the company, which is shown on the Company General Settings.
- ▶ On the Vendor Maintenance screen, the fields on the Extra tab, 10 Notes, 5 Amounts, 5 Yes/No fields, and 5 Dates are available on the Check Layout Maintenance screen and can be added to check layouts.



- ▶ Added an option on the A/P Setup screen that copies the voucher invoice date to the distribution date. Copy Invoice Date to Distribution Date: This check box changes the default date behavior on the Enter Voucher Transaction screen and the Enter Unauthorized Vouchers screen. Select this check box to make A/P copy the date entered in the Invoice Date field to the Distribution Date field. Clear this check box to make the Distribution Date field default to the system date.



- ▶ The Due Date field has been moved from the Additional Criteria screen to the main screen. This affects the A/P Authorize screen; A/P Process screen; A/P Balance List screen; A/R Balance List screen; Cash Flow Refund screen; Cash Flow Terms screen; Cash Flow Who Authorized screen; Cash Flow Who Processed screen.

▶ The Customer Code field that is on the Vendor Maintenance screen can be added to a check layout.

▶ On the Authorize screen and the Process screen, Discount type transactions can be filtered.

Name	Payment date	Run number	Type	Status	Bank account	Our ref.	Your ref.	Payment reference	Cur.	All	Transaction type
ABC Consulting Services	5/12/2002		Supplier	Active	11454689-2254321	58	58		USD		Purchase invoice
AT&T Corporation	5/20/2002		Supplier	Active	55568921-4447845	53	53		USD		Purchase credit note
Compagnolo Manufactur	4/26/2002		Supplier	Active	44444367-7855675	59	59		USD		Other
Compagnolo Manufactur	3/3/2002		Supplier	Active	44444367-7855675	48	48		USD		Discount
Compagnolo Manufactur	3/1/2002		Supplier	Active	44444367-7855675	55	55		USD	1,580.00	Purchase invoice
Compagnolo Manufactur	1/1/2002		Supplier	Active	44444367-7855675	20000086	2000003-0001		USD	30,000.00	Purchase invoice
Heritage Leasing	5/4/2002		Supplier	Active	12345678-9765432	57	57		USD	200.00	Purchase invoice
Involute Trading Compan	4/26/2002		Supplier	Active	99632587-1456289	56	56		USD	321.75	Purchase invoice
Involute Trading Compan	5/4/2002		Supplier	Active	99632587-1456289	49	49		USD	3,450.00	Purchase invoice

▶ When entering a payment for a vendor using Cash Flow Entry, it is possible to populate the freefield2 in the GBKMUT table in the database so the voucher transaction that is automatically created by using the Costs button will be properly flagged as a 1099 transaction. This includes the amount as a 1099 payment in the Amount 1 field on the Maintain Vendors screen, on the extra tab. The Amount1 field is where 1099 values are pulled from when 1099s are printed or electronically created at year end. The vendor on the cash flow transaction must be defined as a 1099 vendor. Click the Costs button to open the Costs screen. (The 1099 Trx check box is not visible for customer transactions.)

GL	GL Description	Amount	Amount DC	Cost unit	Cost center	Resource	Project
			CR			1	
Total:		100.00	Entered: 0	Difference:	100.00		

▶ Added a field called "On Demand Check Text" on the check printing screen. Use this field to enter notes that print on the check. You can enter up to 40 characters. Any text entered will print on all checks in the batch. For this text to print on the check, you must add it to the check layout and select that layout as the check form.

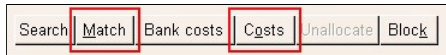
Bar Code

B/C now supports credit card orders that are confirm ship only. These orders must be manually billed in O/E.

Electronic Banking

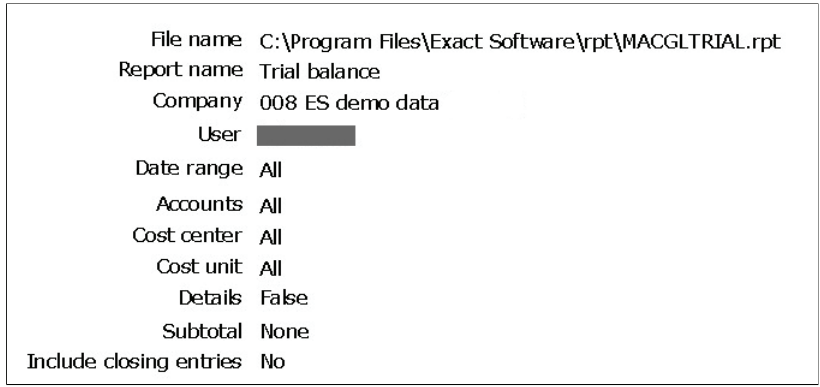
▶ The system will display a message when entering a cash receipt transaction or a payment if the customer or vendor has a status of inactive or blocked. Select Yes to continue with the customer or vendor, or select No to enter a different customer or vendor.

▶ A hot key has been enabled for the Match button: Alt+M. The Costs button hot key has been changed from Alt+T to Alt+O. These are on the Cash Flow Entry screen.

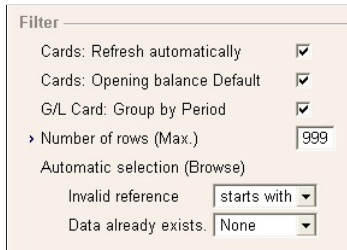


General Ledger

- ▶ Added the report file name and path to the end of the trial balance report.



- ▶ Added a user setting to turn on or off grouping by period for transactions shown on the G/L card. Select the G/L Card: Group by Period check box to group transactions by period. Clear this check box to group by none. This is on the User Settings screen (System Company User Settings).



- ▶ Added an option to the Trial Balance Report to include or exclude closing entries.

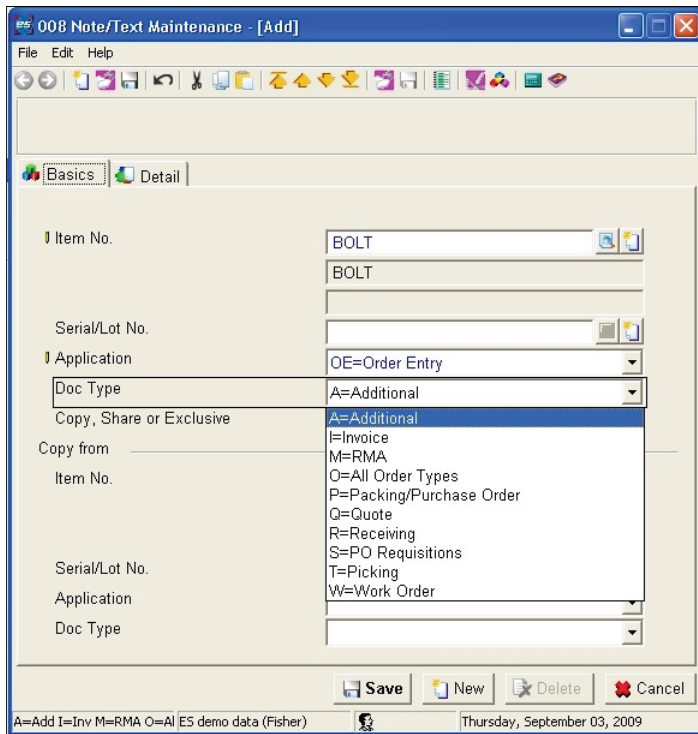


- ▶ On the General Ledger Card, the Customer Card button and Vendor Card button will not be enabled for a user who does not have user rights to customer or vendor cards. User rights are maintained on the User Rights screen (System / HR & Security / User Rights).

- ▶ Added option on the company general settings to clean up historical journal records. For additional information, see document 19.532.607.

Inventory Management

- ▶ Transit transfers can be used for bin transfers. This allows the From and To locations to be the same if the item is a binned item.
- ▶ I/M approved transit inventory transactions also update Qty On Order in the Item/Location for items being shipped at the To location. This is shown on the Reorder Advice Report.
- ▶ Entering transit inventory transactions creates allocations and on order transactions at the locations involved with the inventory transfers. For additional information, see document 19.532.610.
- ▶ The system verifies that ship from locations have sufficient quantity to ship. For additional information, see document 19.532.627.
- ▶ Transfers and G/L Distribution Dates: When a transit inventory transaction status is changed to shipped, the distribution date is the ship date entered on the Enter Transit Inventory screen. You can change this date until the status is changed to shipped. When the status is changed to received, the system date is used as the received date and G/L distribution date.
- ▶ Re-Routing Transfers: If you re-route a transfer, you can enter the new location for the items when receiving a transit inventory transfer. To do this, when you change the Status field to "Received", enter the new location in the To Location field. If an item in the transfer is not stocked at the new location, the system will create an item/location record and display the message "Update To Loc Cost/Price with the From Loc Cost/Price?" Select Yes to copy the cost and price from the From Location to the To Location. Select No to leave the cost and price information as zero at the To Location.
- ▶ Note Text Maintenance allows adding O/E popup reminder notes. In I/M, open the Note/Text Maintenance screen. Select OE=Order Entry in the Application field. Select A=Additional in the Doc Type field.



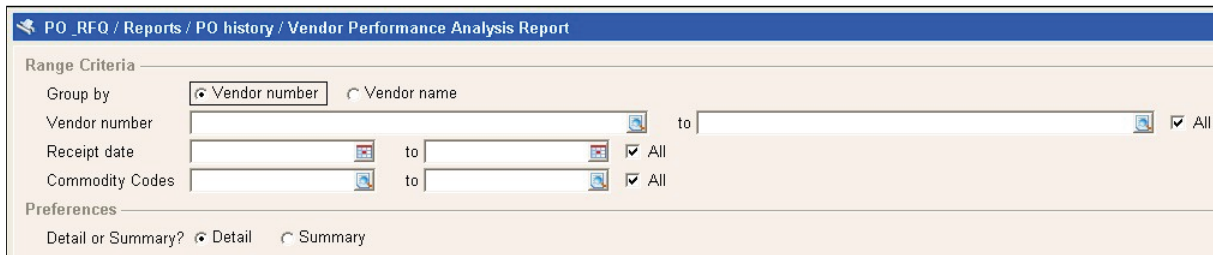
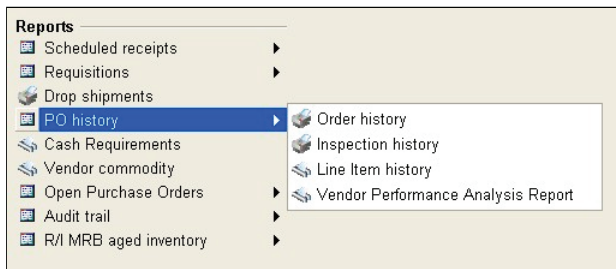
- ▶ Available to promise now shows transit inventory transactions.
- ▶ The Stock Status Report by Item/Cat/Location has an Out of Balance Only? check box. When selected the report includes only the bins, serials, and lots that have a location quantity out of balance with the quantity on hand.

Order Entry

- ▶ In RMA, when creating a credit memo, reshipment, or new order, if an RMA quantity has been received, the system gives the option to create the credit memo, reshipment, or new order using the quantity received or the authorized quantity.
- ▶ In RMA, a credit can be issued to the credit card on a credit card invoice for the sales amount or less.
- ▶ The O/E Cash, Cash Date field default is determined by the OE Cash Default Date field on the Order Entry Setup screen. The Cash Date field can default to the sales order date or the system date.

Purchase Order

- ▶ A Vendor Performance Analysis Report has been added (PO_Rfq/Reports/PO History/Vendor Performance Analysis Report).



Exact Business Analytics (EBA)

Important Note for all customers with customized EBA:

Running the Macola ES version ES9.5.300 update will automatically replace the EBA SQL Views in your database. The new standard scripts are placed under the EBA subdirectory, within the installation directory (for example: C:\Program Files\Exact Software\EBA). If you, or an EBA consultant, have made specific customizations to these SQL Views, you will need to re-apply those customizations after the update is complete. Please check with your EBA consultant if you have any questions regarding this.

This release includes the EBA 5.0 release. EBA version 5.0 includes "Express Users" equal to the quantity of existing Macola ES licensed users at no additional cost. As a result,

your employees now have a unique opportunity to explore the benefits of EBA.

For additional information about the EBA Express User Interface, read document 15.710.841. (This document opens in a new window)

The Embedded EBA functionality also includes access to four existing Analytic Integrations including Sales, Inventory and Purchasing, Manufacturing, and Financials, as well as site licenses to match your existing company count and synchronized user access between Macola ES and EBA.

After performing the steps from the Update Checklist for this release, you will need to:

1. Read the installation and setup document for EBA Express Bundle or EBA version 5.0.

See document 15.797.116 to install and setup the Express Bundle.

See document 17.379.904 to install and setup EBA version 5.0.

Please note that there are changes to the EBA Integration for Macola ES version ES9.5.300. Therefore, even if EBA version 5.0 has already been installed, you must perform these additional steps to fully apply the ES9.5.300 release to your EBA installation:

- a. Run the metadata setup program "Setup_EBA_EXT_METADATA_EN.exe" to install the new standard metadata database. The Product Updater places this program in the EBA folder, in the installation directory (for example: C:\Program Files\Exact Software\EBA).
 - If you do not have customized EBA Metadata, then use the setup program option to replace your active metadata with the new metadata, as described in document 17.379.904.
 - If you have customized EBA Metadata use the EBA System Admin program to merge in the metadata updates to your active metadata database. This process is described in greater detail in document 17.379.904.
 - b. Install new standard templates (standard content) to the EBA Object Repository. You should save copies of any customized standard content before doing this. This process is described in greater detail in document 15.797.116.
2. Download and install an updated Macola ES license voucher. You can download an updated license from the Customer Portal through a document attached to your customer card. When the updated license is applied, you will see an EBA tab and find several new EBA access points from within your Macola ES menu system.

You must download and install Macola ES version ES9.5, Macola ES version ES9.5.100, Macola ES version ES9.5.200, or Macola ES version ES9.5.300 to take advantage of Express User Interface. If you have previously licensed EBA, you will gain Express Users to complement purchased licenses for Power Users and/or Standard Users (previously Consumer Users).

For short on-demand training about the Express User Interface, click Exact EBA On-Demand Training for EBA Express User. (log in may be required) (This document opens in a new window)

This on-demand training video demonstrates how to open the available standard views; use the data filtering tools; create standard reports and graphs; and export data to Microsoft Excel or a PDF file.

For a detailed list of features and corrections for EBA version 5.0, read document 17.851.038. (This document opens in a new window)

When setting up views in EBA, refer to the EBA Mapping Guide, document 18.206.371. (This document opens in a new window)

Exact EDI

If you are using Exact EDI and wish to update to the latest version, please follow your normal update procedure for Exact EDI. For more information, read 15.191.189. (This document opens in a new window)

Exact Event Manager

The current version of Exact Event Manager (release 7.5) is compatible with Macola ES ES9.5.300.

▶ 06.246.746 (This document opens in a new window)

Crystal XI (Release 2)

If you purchased Crystal XI and want to install it to a directory other than its default, you must install it before installing Macola ES. If you install Macola ES first, Crystal XI will install only in its default directory, unless you uninstall the Macola ES Crystal run time components.

1. All of the reports have been saved as Crystal XI (Release 2) for Macola ES version ES9.5.300.
2. All of these reports can be opened in Crystal 10; however, a message will display when opening a report telling the user that some of the new functionality available in Crystal XI will be lost when opening the report in Crystal 10.
3. There is not an option in Crystal XI to save the report as a previous version.
4. Any Crystal 10 report will run with Crystal XI runtime components installed.

Crystal 10

1. Any Crystal 10 report can be opened in Crystal XI and saved as a Crystal XI report.
2. Crystal 10 reports will run with the Crystal XI runtime components installed.
3. A Crystal XI report can be opened and edited in Crystal 10 (see notes above for more detail).
4. Crystal XI reports will run with Crystal 10 runtime components installed.

Note: If you are using Crystal Enterprise v10, be aware that Macola ES installs the Crystal Reports XI runtime components. To continue using Crystal Enterprise 10, please read document 18.534.866.

Changes in this Release

Database and Screen Changes

To see a complete list of database and screen changes in this release of Macola ES, refer to document 19.579.998.

Quality Fixes

To see a complete list of quality fixes addressed in this release of Macola ES, refer to document 19.575.773.

Additional Information Regarding this Update

Hardware Requirements and Supported Platforms

For the current list of Macola ES hardware requirements and supported platforms, read document 17.218.227. (This document opens in a new window)

Customized Crystal Reports

An upgrade to Crystal XI is required to modify embedded Crystal Reports delivered with ES9.5.300. If you have customized any standard Crystal reports from Macola ES, and the customized reports have the same name as the original, the update will overwrite the reports. You should back up all customized Crystal reports before you update. You can restore and test your customized reports after the update is complete.

Note: If you have a modified Crystal 10 OE Invoice or Re-print posted invoice, please read document 17.102.085.

You should test any modified Crystal reports on one workstation before copying them to all workstations. Some Crystal reports for Macola ES have changed for version ES9.5.300. Read document 19.579.915 for the list of changed reports. If you have a modified version of any of the report on the list you should test it.

Macola ES with Integrated Exact Synergy

If you are using Exact Synergy with Macola ES, please update in the following order:

1. Update Macola ES, but do not open Macola ES when prompted.
2. Update Exact Synergy, but do not open Exact Synergy when prompted.
3. Open Macola ES, allowing the database optimizer to run, if needed. You can open Exact Synergy after the Macola ES database optimizer has finished.

Database Optimizer

Macola ES Database Optimizer (document 04.663.677) -- When you update Macola ES, if the database needs to be synchronized, the Macola ES Database Optimizer will run.

Troubleshooting

When updating, if you receive a message "Incompatible Internet Explorer setting", read document 15.950.306 for a resolution.

Exact InterConnect 9.5

For customers using InterConnect product version 2008.2.3.29 or prior versions, updating your Exact Synergy version ES9.5.300 will install Exact InterConnect version 9.5 and **uninstall** the previous InterConnect product.

A new license file is required to run the Exact InterConnect product. **Do not update** until you have installed the new license file.

For additional information about Exact InterConnect, refer to the Exact InterConnect release notes in document 19.023.742 (This document opens in a new window)

Exact Synergy

If you are using Exact Synergy version ES9.5.200, instructions to update to Exact Synergy ES9.5.300 can be found in document 19.597.249.

If you are using Exact Synergy version ES9.5.100 or previous, instructions to update to Exact Synergy ES9.5.300 can be found in document 19.597.334.

Disclaimer:

Despite the continued efforts of Exact to ensure that the information in this document is as complete and up-to-date as possible, Exact can not be held accountable for the correctness and/or completeness and/or specific applicability of the published and/or requested information in this document. The extraction and use of information from this document remains at all times completely within the user's own risk.