

# Production Order Processing with Material Issue and Return

ABSTRACT

While the Macola ERP system creates a perpetual inventory control environment, it lacks the real time capability required to track the movement of materials. Pocket ES WMS provides real time inventory management and improves the tracking and recording of materials management. Without WMS, Macola's paper based ERP system creates lag time between material movement (inflow, outflow and transfers) and recording transactions in Macola. This is particularly true of POP where material is physically issued to an order and not recorded until production is reported. In a Bin environment the issue and pick process for the POP order is when the Bin's should be identified and Lots should be bar coded for accuracy. Pocket ES has designed new business objects for material issue and return based on the BOM back flush flag and then manages the final POP Reporting of production

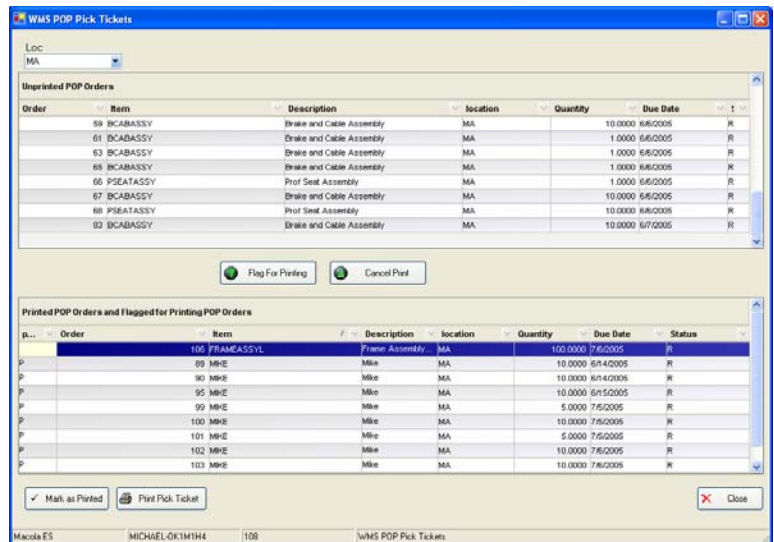
ARCHITECTURE

Pocket ES is a seamless warehouse management solution using readily available wireless technology, portable Microsoft Windows® CE .NET-based scanning devices, Macola Business Objects developed by WiSys and Microsoft Server technology. Pocket ES **does not** require Paper, Synchronization, Batch Uploading, or the Macola Bar Code Module.

As in SFC Material Management, as material is issued, inventory is relieved to WIP. Now POP does something similar, each material issue transaction, whether manual or back flush, issues from inventory to WIP. On order completion adjusting entries are made from WIP to WIP Variance.

FEATURES

- On-line Bar Coded Material Picking and Returns
- Supports Serial/Lot Inventory with hard allocate at picking
- Supports Multi-Bin Inventory with hard allocate at picking
- New Picking Report includes Bin and Lot recommendations on a Bar Coded Pick Ticket
- Both Pick or back flush components based on the BOM flag
- Report Production and back flush only back flush components and report finished goods.
- Finished Goods Bar Code label printing from Work Station or Device



The Pocket ES Pick Screen allows the selection of POP orders for printing of Pick Tickets. The Bar Coded Pick Ticket will also allow the inclusion of Bin and Lot recommendations that are reserved through hard allocations that are managed at material issue. Only non-back flush items are on the Pick Ticket as identified in the BOM.

The Attivo Group

Phone: 949-642-9200

E-mail: [info@attivoconsulting.com](mailto:info@attivoconsulting.com)

Web: [www.attivoconsulting.com](http://www.attivoconsulting.com)

# ▶ Production Order Processing with Material Issue and Return

**POP Pick**—The PDA allows the selection of individual orders for picking or wave picking by item and Bin Pick Tour. As Items are picked they are issued from inventory and the hard allocations are adjusted. The transactions are very similar to a SFC material issue with the inclusion of hard allocate.

**Material Returns** are also supported with Lot management to the correct lot issued to the POP Order. As in SFC Material Returns. The Lot can be scanned to identify the item and POP Order to make the transaction entry as minimal as possible.

**Production Reporting** is supported on the Bar Code device or on a PC. Orders can be flagged complete on either platform or Bar Code labels can be printed for the Finished Goods including Serial and Lot numbers.

**Production Backflush**—A new transaction for POP that will actually create the POP Order, Release the Order, Backflush the Material and Complete the POP Order all in one transaction. As in a standard Production Report, Bar Code labels can be printed for the Finished Goods including Serial and Lot numbers.

**POP Pick**

POP Order: 106

Item	Qty
FORK	100
FRAME	100
WHEELSF	100
WHEELCOVER	100

Parent: 106 - FRAMEASSYL  
 Comp Item: FORK  
 Description: Fork, Blk, Titanium Mesh  
 Loc: MA  
 Qty Planned: 100  
 Pick Qty: 100

Close Save

**POP Return**

Item/Lot: HORN

Order	Item	Loc
98	HORN	MA
99	HORN	MA
101	HORN	MA
102	HORN	MA

Item No: HORN  
 Description: Horn  
 Loc: MA  
 Qty: 5

Close Save

**Report Production**

Order No: 106  
 Parent Ord: PARENT  
 WIP Status: No WIP  
 Item No: FRAMEASSYL  
 Description: Frame Assembly, Teardr  
 Loc: MA

Prod. Qty: 100  
 Qty Remain: 100

Complete Order

Clear Cancel Save

**Production Backflush**

Item No: FRAMEASSYL  
 Description: Frame Assembly  
 Loc: MA  
 Qty: 350

Cancel Save

michael-ok1m1h4, 108