

▶ Pocket ES WMS Distribution Module

ABSTRACT

Pocket ES Warehouse Management System (WMS) is a reliable, affordable, and easy-to-use inventory management solution that provides real time tracking of the movement of material.

Benefits of the Pocket ES Inventory Manager include improved inventory accuracy, increased labor productivity, and better customer service through tightly controlled inventory.

The WMS Distribution Module includes functionality for PO Receiving, Inventory Transactions and Cycle Counting. Bin Management with Put Away is also part of the Distribution Module.

ARCHITECTURE

Pocket ES is a seamless warehouse management solution using readily available wireless technology, portable Microsoft Windows® CE .NET-based scanning devices, Macola Business Objects developed by WiSys and Microsoft Server technology. Pocket ES **does not** require Paper, Synchronization, Batch Uploading, or the Macola Bar Code Module.

Real time access to your database via 802.11b/g WiFi in your facility ensures that your inventory information is updated accurately and in a timely manner.

Warehouse Manager has been developed for a variety of handheld devices, including devices from Symbol Technologies, PSC Falcon, Zebra Printing devices and more.

The Attivo Group
Phone: 949-642-9200
E-mail: info@attivoconsulting.com
Web: www.attivoconsulting.com

FEATURES

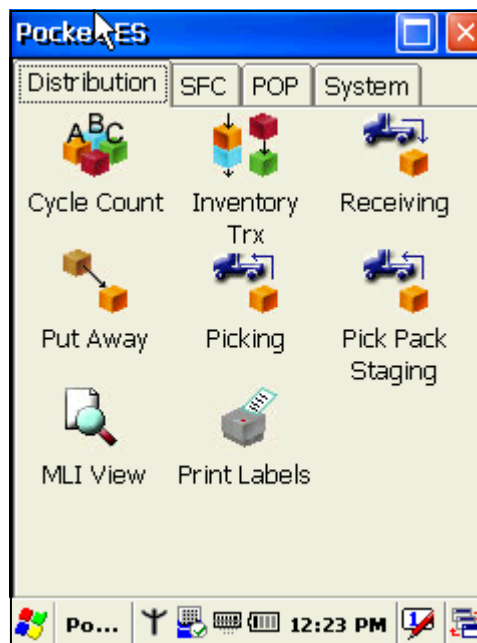
▶ Real Time Receiving, Put Away, Picking, Cycle Counting, and Inventory Movements

Supports Serial/Lot, Multi-Bin, and Multi-Location Inventory

Barcode Printing/Item Labels on-the-floor

Lookup by Item/Vendor Item/UPC/Serial-Lot

Supports both Macola ES and Progression SQL



Pocket ES Menu— The CE .NET Bar Code Devices provide a highly graphical and robust interface for data entry. They are rugged Devices and have built in scanners for reading Bar Codes. The screens are very high resolution color displays.

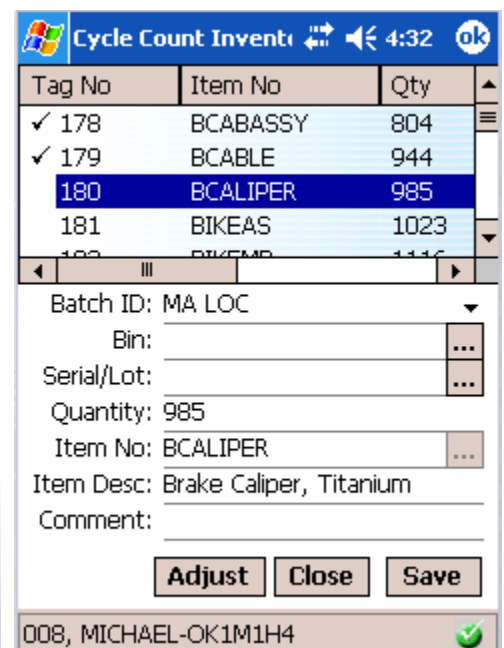
The Pocket ES Menu and entry screens takes advantage of this graphical environment. The Pocket ES screens are very clean and crisp.

Cycle Counting: Cycle

Count batches can be split up and deployed to multiple devices. When the batch is selected on the device, only the tags that are assigned to the device are available.

As each tag is counted a check is displayed to alert the user that the tag has been counted.

To make the process easier, the user simply selects a tag and clicks the adjust button to type in the counted quantity.



▶ Pocket ES WMS Distribution Module

Inventory Transactions: Many times material quantities and location errors are identified on the floor. These transactions can now be recorded real time so the Macola inventory system is always providing accurate information.

Issues, Receipts, and Transfers can be done on the device supporting Locations, Bins and Ser/Lot.

Receiving: When an item is received the user simply scans the item and the receiving module locates all available PO's that contain either the item, vendor item, MFG Item, or UPC number. If the user knows the PO number then the PO number can be scanned.

The user selects the correct order from the list and updates the received quantity. Immediately the Macola ES or Macola Progression inventory information is updated.

If the Item is Serial or Lotted then the Ser/Lot codes are built based on a new multi segment Lot Builder or they are scanned from the manufacturer label. Labels can also be printed at receipt.

Put Away: The Put Away module is universal to all Bin Put Away requirements. Items can be received in the Receiving Bin representing the receiving doc and Finished Goods can be received into a staging area. Items can then be put away to their final storage bin and recorded using the Put Away application. Warehouse Management is much more efficient and beneficial when Bins are used to accurately store and locate material.

The screenshot displays four overlapping windows from the Macola ES WMS Distribution Module:

- Enter Inv Trx:** A form for recording transactions. Fields include Trx Type (T=Transfer), Doc Date (9/20/2005), Item No (HORN), Item Desc (Horn), UOM (EA), Loc (MA), To Loc (CA), and Quantity (20).
- Receiving:** A window for processing receipts. It shows a table with columns for Ord No, Line, Item No, and Loc. A row is highlighted with Ord No 62, Line 5, Item No HORN, and Loc MA. Below the table, there are fields for Item No (HORN), Item Desc (Horn), Qty Remain (30), and Rec Qty.
- Inventory Adj:** A window for adjusting inventory. Fields include Bin (RECV), Ser/Lot (KL2002000000061), Exp. Date (09/20/2020), and Qty.
- Receiving PutAway:** A window for moving items from a receiving bin to a final storage bin. It includes an Item Lookup field and a table with columns for Item No, Bin, and Qty. The table shows two rows: STEM (Bin 100, Qty 20) and HORN (Bin 100, Qty 20). Below the table, there are fields for Loc (MA), Ser/Lot (KL2002000000060), Qty (20), and Bin (300). Buttons for 'Clear Qty', 'All Items', 'Put Away', and 'Close' are visible.