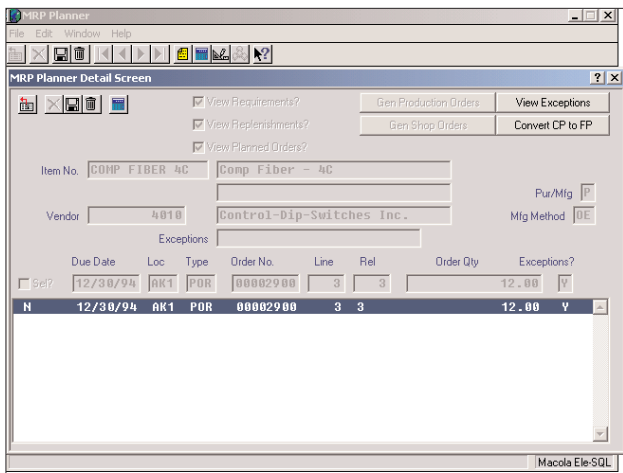


PROGRESSION'S VERSION 7.6 MATERIAL REQUIREMENTS PLANNING (MRP) MODULE IS THE IDEAL SOFTWARE FOR THE SINGLE-SITE MANUFACTURING AND MULTIPLE WAREHOUSE OPERATION. ADVANCED MRP FUNCTIONALITY STREAMLINES YOUR MANUFACTURING/WAREHOUSE OPERATION AND ORDERING. PROGRESSION'S MRP MODULE INCORPORATES NEW FUNCTIONALITY TO MAKE MRP A MORE VISUAL AND INTERACTIVE PLANNING TOOL.



*MRP gives you the ability to view exceptions, instantly change order quantities, and generate replenishment orders from one screen.*

New MRP functionality also improves on-line pegging with drill downs to the source of demand or supply. Plus, the conversion of Computer Planned Orders (CPO) to Shop Orders, Production Schedules, and Purchase Orders has been streamlined making it easier for you to track and expedite orders.

### UNLIMITED MRP LOCATIONS

MRP easily lets you incorporate netting against unlimited locations with the ability to select one or multiple locations, including, the ability to instantly view Receiving and Inspection locations.

### AUTOMATICALLY GENERATE REPLENISHMENT ORDERS

Replenishment Orders such as Production Orders and Shop Orders, can be created automatically from both Firm Planned Orders and Computer Planned Orders. Purchase orders can also be generated automatically based on MRP's recommendation.

### PEGGING

Progression's unique pegging feature provides a history of pegging information, allowing you to track difficult information through the path of orders and product structure, to higher level requirements. This is possible through an on-line, interactive process and through the various reports.

### ADVANCED REPORTS AND GRAPHS

Information and reporting is instantly available with MRP's advanced reporting capabilities. In addition MPC's advanced graphing capabilities provide you with easy-to-read visual representations of your manufacturing information.

### MRP REPORTS

- Valued Projected Inventory Balance Report
- Exception Report
- MRP Inventory Aging Report
- Net Change Comparison Report
- Pegging Report
- Period Report
- Purchase Request by Vendor Report
- Value Projected Inventory Report
- What If Comparison Report



### SERIAL/LOT EFFECTIVITY

You also gain the capability to incorporate Serial/Lot effectively in MRP. Progression's advanced Material Planning will validate Serial/Lot expiration dates while netting on-hand inventory quantities.

### HIGH PROBABILITY QUOTES

Customer quotes with a high probability of becoming orders can be easily included in your MRP planning and financial picture.

### MATERIAL PLANNER

With the Material Planner, you can view specific exceptions, or a group of exceptions, triggered by the regeneration. This provides the buyer/analyst an interactive environment to not only view the exceptions, but also be able to take action on those exceptions. All this is done through a single interface. This single interface will also allow computer planned orders to be converted to purchase orders very efficiently. Where there is a need to expedite an order or change the quantity, the planner allows you to change them on your request one at a time or in a group.

### MORE INFORMATION

For more information on how to put the power of Exact Software North America to work in your front office and mission critical back office, call today:

**800.468.0834**



**Exact Software North America**  
800 Brickstone Square  
Andover, MA 01810  
Tel: 888.877.5126  
Fax: 978.474.9317  
Sales: 800.468.0834 ext 550

Boston, MA  
Cambridge, ON  
Columbus, OH  
Houston, TX  
Los Angeles, CA  
Orlando, FL  
San Francisco, CA

[www.exactsoftware.com](http://www.exactsoftware.com)