



# Exact Supply Chain EDI

"Exact Supply Chain EDI provides customers seamless pathways to share information and conduct transactions"

Finding breakthrough technologies to squeeze more profits out of your supply chain is becoming increasingly difficult. Fortunately, Exact Supply Chain EDI solution is your ticket to bigger profits.

Exact Supply Chain EDI provides the means to electronically integrate the most common business transactions from customers and suppliers into your back office ERP solution by using technology that most companies already use today. The resulting labor savings and elimination of common errors can provide huge savings for mid-sized manufacturing companies.

The Exact Software Supply Chain EDI enables you to send purchase orders to suppliers electronically, receive an Advance Shipment Notice (ASN - an electronic manifest of goods) and an invoice document. Naturally, Exact's solution enables your company to do the same with your customers—a complete Supply Chain Solution.

## Drive down the costs of your Supply Chain using Customer Side EDI

Customer Side EDI refers to EDI processing when your firm is the customer and you are sending purchase orders to Vendors. One of the most powerful features of Customer Side EDI is the receipt of the ASN from your supplier. During their EDI fulfillment process, your vendor can send an ASN at the time of shipment which is integrated into your Exact back office system thus providing visibility into goods in-transit plus, when the goods arrive, the scan of a single barcode label can receive the entire shipment (including serial number and lot number registration). The vendor's invoice can also be integrated electronically. The invoice is checked electronically against the original purchase order, and if successful, can be posted into your Exact accounts payable system at the click of a mouse.



## Exact Software Supply Chain EDI benefits:

- Measurable ROI along with increased gains in efficiency
- Better visibility of inbound and in transit products
- Reduce in paperwork and errors.
- Intelligent barcode receivings—reduces operational complexity for your receiving personnel
- Integrated to your purchasing, inventory and billing applications
- Extremely low cost and easy to use
- Turnkey product is easy and affordable to implement



**Exact Software Business Partner**  
The Attivo Group, Inc.  
2052 Newport Blvd., Ste. 6-245, Costa Mesa, CA 92627  
Phone: 949-642-9200; Fax: 949-631-6453  
info@attivoconsulting.com

Exact Software North America  
www.exactamerica.com/macola  
1.800.468.0834



# Exact Supply Chain EDI

## Gain Efficiency and Fast Compliance with Supplier Side EDI

Supplier Side EDI refers to EDI processing when your firm is the supplier and your customer is sending purchase orders to you. In Exact's solution, customer transactions are carefully verified electronically and then integrated thus eliminating the laborious and error prone manual processes that hamper most businesses. Exact's EDI solution covers a broad range of industries and standards including ANSI x.12 and EDIFACT. Finally, the Exact Supply Chain EDI solution offers compliance with virtually every document set. A large library of preexisting customer compliance kits makes it a great choice for companies that plan to do business with larger enterprises that require EDI compliance.

## Low Cost Internet-based EDI Using The Exact Business Network

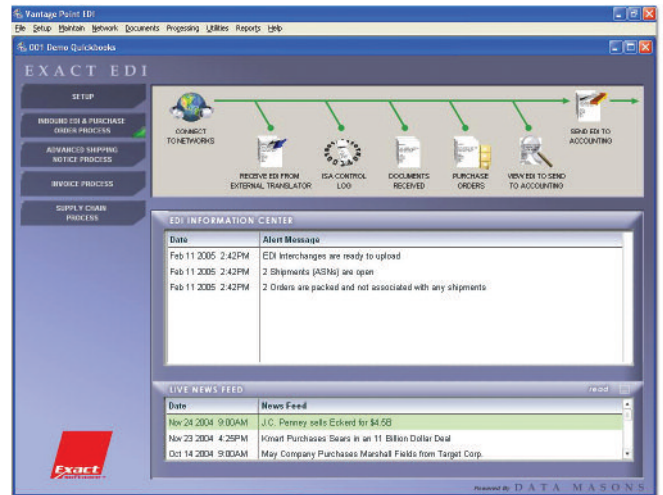
The Exact Business Network (EBN) is the perfect complement to run the Exact Supply Chain EDI solution. EBN is an internet-based secure communications platform that enables your customers, vendors, and suppliers to deliver and retrieve business transactions electronically.

EBN provides electronic EDI "mailboxes" for customers and suppliers to deliver and retrieve transactions in a secure manner via the internet. In this way, each supplier and customer has a separate location for their transactions so that all transactions are easily and securely exchanged.

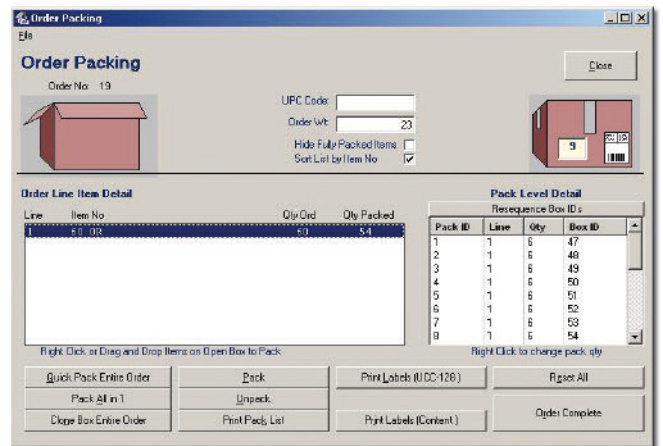
EBN employs a 440 bit encryption schema that prevents unauthorized access and decryption of your business data. EBN can be deployed very affordably—it only requires a modestly equipped computer and a connection to the internet.

EBN provides your Company with the means to affordably automate the entire supply chain without any VAN or transaction charges.

For more information about Macola ERP, please contact your Exact Software business partner or account representative today, or visit [www.exactamerica.com/macola](http://www.exactamerica.com/macola).



Our exclusive EDI flow menu provides a clear "picture" of the process. Click an icon and the activity is processed. The EDI information center keeps the user informed of errors to be resolved and tasks to be done.



The order packing process illustrates how easy the application is to use including many time saving buttons.



**Exact Software Business Partner**  
 The Attivo Group, Inc.  
 2052 Newport Blvd., Ste. 6-245, Costa Mesa, CA 92627  
 Phone: 949-642-9200; Fax: 949-631-6453  
 info@attivoconsulting.com

Exact Software North America  
[www.exactamerica.com/macola](http://www.exactamerica.com/macola)  
 1.800.468.0834

